

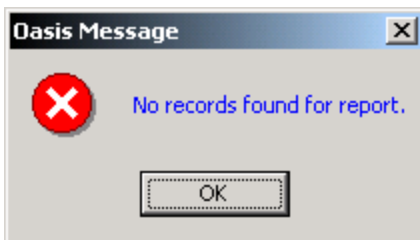
Parameters for Report Code: ACTDTLYAL

Parameters

Accident Date From	05/16/2001
Accident Date To	05/16/2004
As of Date	05/16/2004
Claims Status	
LOB	CP,
Coverage	70,60,
Location	7800,

* Codes 70, 60 listed after the loss report parameter "Coverage" represent property coverages.

**Code 7800 listed after the loss report parameter "Location" represents the Office of the Secretary of State.



There were no claim records found in the claims management system, given the above listed parameters.